



MARUZEN

General Catalog



MARUZEN

UH099Z-1 20L/min
19MPa

注意

・エンジン起動する前に必ずホースを
戻し、ロックレバーを始動時の位置に
戻してください
・本機はISO 2号相当の規格の
部品を使用しております

www.maruzenkogyo.co.jp

Hydraulic power pack

UH070 CE

Smallest power pack.

Oil flow: 20l/min Max pressure: 11.7MPa

Need only one operator

Easy to bring to any narrow spaces or load on mini-vans or even on small boats for remote job sites.

Powered by reliable Honda engine GX200.



UH090S

Low noise type.

Suitable for use in residential areas, indoors, or at night.

Oil flow: 20l/min Max pressure: 14MPa

Power-on-demand system

Save fuel and reduce noise when the tool is not in use.



UH130 CE

Oil flow adjustable type

20-25-30l/min

Max pressure: 13.7MPa

For high torque-required products such as rock drills and cutters.

With electric starter

High pressure tools are available

by connecting with the booster.

Powered by reliable Honda engine GX390.



Specification

MODEL		UH070	UH090S	UH130
Weight	kg/lbs	45 / 99	88 / 194	100 / 220
Max pressure	Mpa / psi	11.7 / 1696	14 / 2030	13.7 / 1987
Oil flow	lpm / gpm	20.5 / 5	20.5 / 5	20-25-30 / 5-6.6-8
Engine		Honda GX200	Yamaha MZ300	Honda GX390
Fuel tank capacity	L / gal	3.1 / 0.8	5.8 / 1.5	6.1 / 1.6
Usable time		2 H	2 H	2 H
Hydraulic tank capacity	L / gal	4 / 1	4.5 / 1.1	8 / 2.1
Engine starting		Recoil	Recoil	Electric/Recoil
Dimensions	mm / inch	591x480x550 / 23x18x21	760x550x680 / 29x21x26	770x590x750 / 30x23x29
Sound power level	dB	99	Rated load : 68 No load : 59	97





Hydraulic handheld breaker

- ✓ **Small and lightweight, but powerful**
Maruzen handheld breakers are designed to be compact and small for easy handling. Even with the small body, you will be amazed at the power.
- ✓ **Anti-bouncing system**
Reduces the bounce of the moil point when hitting. Able to hit on the exact point where the operator aims.
- ✓ **Can be used at cold weather / wet condition**
Hydraulic tools can be used in cold weather, during the rainy season or even underwater.



Anti Bouncing Design

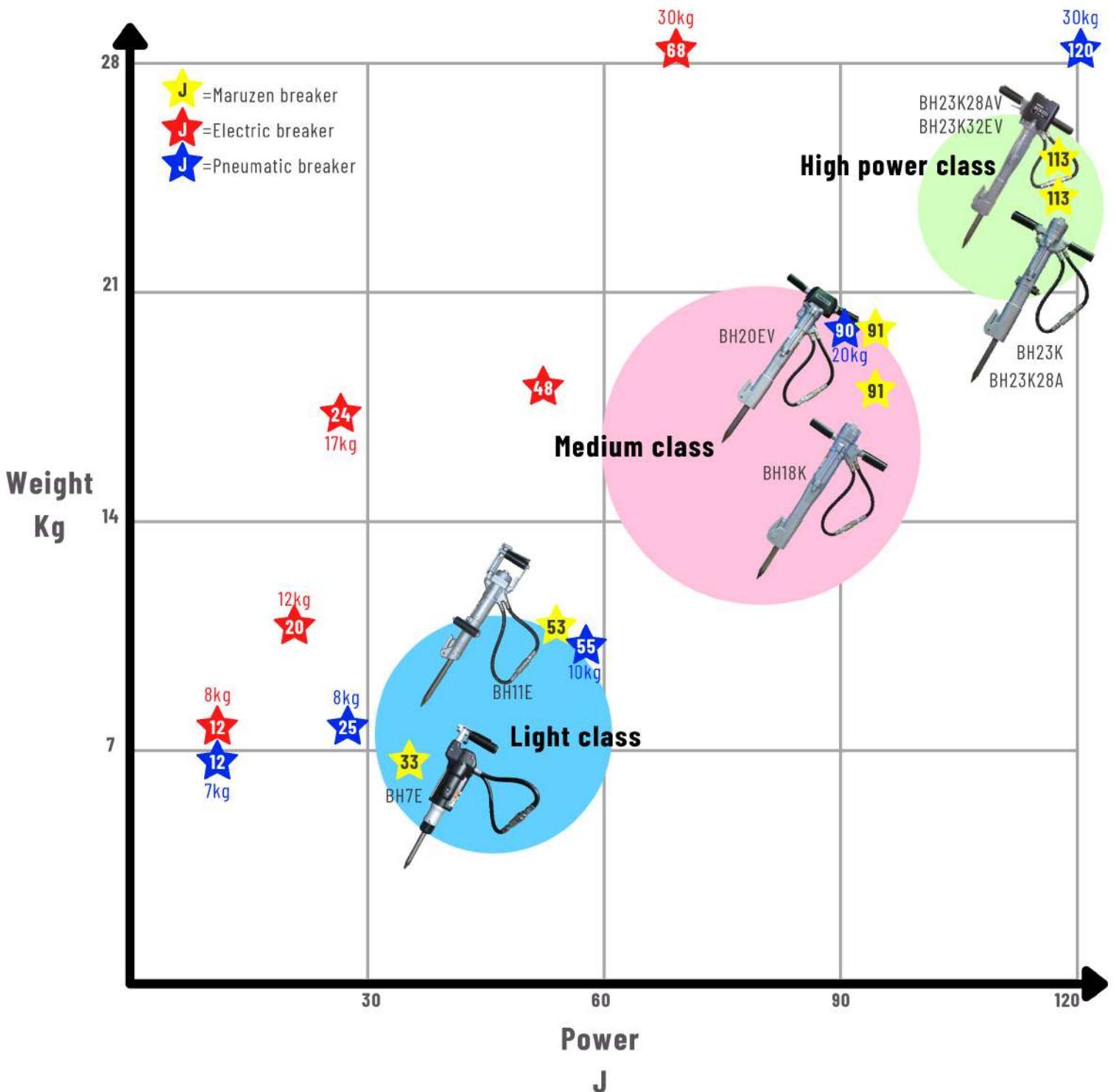


Choose the correct breaker to get your work done fast and easy!

How to choose your breaker

Each breaker has a different feature.

Check the feature of each breaker and find your best one depending on your job site.



Hydraulic handheld breaker



Light class Suitable for horizontal work



BH7E



BH11E



Medium class Suitable for light constructions



BH18K



BH20EV CE

Specification

MODEL		BH7E	BH11E	BH18K	BH20EV
Weight	kg / lbs	7 / 15	11 / 24	18 / 39	20 / 44
Working pressure	Mpa / psi	8-11 / 1160-1595	8.8-12.7 / 1276-1841	8-11 / 1160-1595	8-11 / 1160-1595
Max pressure	Mpa / psi	21.4 / 3104	20.6 / 2987	21.4 / 3104	20.6 / 2987
Oil flow	lpm / gpm	20.5 / 5	20.5 / 5	20.5 / 5	20.5 / 5
Blow per minute	bpm	1920	1900	1700	1450
Impact energy	J	33	53	91	91
Shank size Hex	mm inch	19 x 50 3/4 x 2	22 x 83 7/8 x 3-1/4	25 x 108 1 x 4-1/4	25 x 108 1 x 4-1/4
Sound power level	dB	N/A	N/A	N/A	104
Vibration level, 3 axis	m/s ²	8.48	8.91	N/A	8.49
Option		Side handle	Side handle	Side handle	Anti-vibration handle

High power class Suitable for heavy duties



BH23K

HEX 25 x 108mm (1" 4-1/4")

BH23K28A

HEX 28 x 153mm (1-1/8" x 6")



BH23K28AV

HEX 28 x 153mm (1-1/8" x 6")

BH23K32EV CE

HEX 32 x 160mm (1-1/4" x 6-1/4")

OPTIONAL TOOLS



Specification

MODEL	BH23K	BH23K28A	BH23K28AV	BH23K32EV
Weight	kg / lbs		24.5 / 54	
Working pressure	Mpa / psi		8-11 / 1160-1595	
Max pressure	Mpa / psi		20.6 / 2987	
Oil flow	lpm / gpm		20.5 / 5	
Blow per minute	bpm		1000	
Impact energy	J		113	
Shank size Hex	mm inch	25 x 108 1 x 4-1/4	28 x 153 1-1/8 x 6	28 x 153 1-1/8 x 6
Sound power level	dB		108	
Vibration level, 3 axis	m/s ²		7.79	
Features	Anti-vibration handle			

*Adjusted with orifice plug



Maruzen Hydraulic Handheld Rock Drill

- ✓ **Speed mode adjuster**
Can choose the rotation speed and hitting power depending on the object's hardness
- ✓ **Breaking mode (DIAL 0)**
Can be used as a breaker or a splitter with grooved moil point or wedge
- ✓ **Built in compressor**
Maruzen rock drill can generate flushing air by itself.
No need to bring huge air compressor up to 1m depth.



**SPEED MODE
ADJUSTER**



BREAKING MODE



**BUILT IN
COMPRESSOR**

Built in compressor No need of a big air compressor!



Specification

MODEL		DH204	DH205
Weight	kg / lbs	20 / 44	22 / 48
Working pressure	Mpa	8.8-11.8 / 1276-1711	7.8-11.8 / 1131-1711
Oil flow	lpm	20-25 / 5-6.6	30 / 8
Blow per minute	bpm	1000-1250	1000-1350
Rotation per minute	rpm	0-600	0-600
Shank size Hex	mm	22 x 108	22 x 108
Max hose length	m	1/2" x 20	1/2" x 20
Sound power level LWa	dB		103
Vibration level 3 axis	m/s2		9.5
Drilling depth w/o external air*		0.8-1m	1-1.2m

*Depends on the rock type and bit size

Hydraulic Handheld Post Driver



KH193 CE

Light weight 20kg

Lightest model post driver.

Easy and safe to bring, hold, and handle.

Inner cup equipped

To prevent the risk of the post get stuck or sand coming in.



KH240V CE

Adaptors available

Special adaptor can be used depending on the post, fence, or stake.



Standard ϕ 48.6



Guard pipe ϕ 60.5



Guard pipe ϕ 101 & 114



H angle steel up to ϕ 114



Specification

MODEL		KH193	KH240V
Weight	kg / lbs	20 / 44	24.5 / 54
Working pressure	Mpa / psi	8-12 / 1160-1740	7.8-11.8 / 1131-1711
Max pressure	Mpa / psi	20.6 / 2987	20.6 / 2987
Oil flow	lpm / gpm	20 / 5	20 / 5
Blow per minute	bpm	1920	1080
Pile dia	mm	ϕ 50	ϕ 80 (*100 & 120)
Max hose length	m	3/8" x 20	3/8" x 20
Coupling		3/8" Couplers	3/8" Couplers
Sound power level LWa	dB	111	108
Vibration level 3 axis	m/s ²	9.5	11.2
Others			*option

Hydraulic Hanging Post Driver



KH800 CE

Maruzen strongest post driver

For large diameter pipe such as guard rail pipe or H steel pipe.

Adaptors available

Special adaptor can be used depending on the post, fence, or stake.



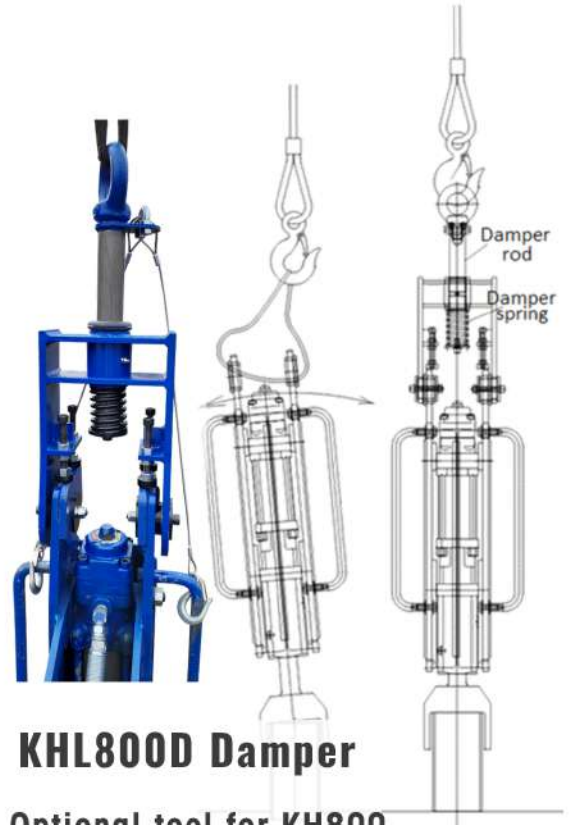
STANDARD $\Phi 150$



H STEEL*



GUARD RAIL POST*



KHL800D Damper

Optional tool for KH800.

Allow to keep KH800 straight.

Improve efficiency and save working time.

Specification

MODEL	KH800	
Weight	kg / lbs	114 / 251
Working pressure	Mpa / psi	9.8-14.7 / 1421-2132
Max pressure	Mpa / psi	27.5
Oil flow	lpm / gpm	20-25 or 25-35** / 5-6 or 6-9**
Blow per minute	bpm	500-950
Pile dia	mm	$\Phi 150$
Max hose length @20-25L		3/8" x 10m
Max hose length @25-35L		1/2" x 10m
*Option driving tool	mm	H steel : 100 x 100 150 x 150
		Guard rail : $\Phi 114.3$ & 139.8
Other		**adjust with orifice plug

KHL800 Rig leader CE



Optional tool for KH800

For more accurate, quick, and safety operation.

Hydraulic Handheld Earth Drill



OH01 CE

Vertical drilling

High torque for fast drilling.

Shock absorber can be attached.

Prevent operator get swung by the power.

Rotate forward/reverse

Only one operator needed



AY01H CE

Horizontal drilling

Suitable for piping work.

Rotate forward/reverse

Only one operator needed



Specification

MODEL		OH01	AY01H
Weight	kg / lbs	14 / 30	15 / 33
Working pressure	Mpa / psi	9.8-13.7 / 1421-1987	9.8-13.7 / 1421-1987
Max pressure	Mpa / psi	13.7 / 1987	13.7 / 1987
Oil flow	lpm / gpm	9.5-25 / 2-6	9.5-25 / 2-6
Max torque	N · m	88	88
Max rotation	rpm	300	300
Drilling performance	φ50-75 m	4-5	7-8
	φ100-200 m	3-4	3-5
	φ250-300 m	2-3	2-3
	φ350 m	1	---

Rig mounted breaker

Suitable for use on narrow demolition sites, such as in residential areas, where it is difficult to bring in a large excavator.



BH501

Mount with
0.8-1.0 ton class excavator



BH801

Mount with
1.5-2.5 ton class excavator



Specification

MODEL		BH501	BH801
Weight	kg / lbs	47 / 103	95 / 209
Working pressure	Mpa / psi	8.8-13.7 / 1276-1987	9.8-14.7 / 1421-2132
Max pressure	Mpa / psi	20.6 / 2987	27.5 / 3988
Oil flow	lpm / gpm	12-25 / 3-6	20-35 / 5-9
Blow per minute	bpm	600-1200	500-950
Coupling		3/8" Couplers	3/8" Couplers
Hose connection		1/2"	1/2"
Suitable machine (Bucket capacity) m ²		0.02	0.04-0.08
Suitable machine (Weight) t		0.8-1.0	1.5-2.5
Shank size	mm	φ45 x 450	φ50 x 550

Hydraulic Core Drill / Reciprocating Saw



DH190

Accurate work by an anchor.

Wall drilling by attaching excavator.

High torque and efficient work speed by hydraulic motor.

Max core Dia' : \varnothing 204mm



HRS400

Safety work for both water-pipe and gas-pipe
No kickback. No harm to other pipes.

For cutting cast iron & concrete

Able to cut cast iron pipes with a concrete layer inside.

Specification

MODEL	DH190	
Weight	kg / lbs	29 / 63
Working pressure	Mpa / psi	6-11.7 / 870-1696
Max pressure	Mpa / psi	11.7 / 1696
Oil flow	lpm / gpm	20.5 / 5
Drilling torque	N · m	73.2
Rotation per minute	RPM	374
Stroke	mm	480
Thread connection	A rod thread	
Max dia of core bit	mm	\varnothing 204 / 8"
Max hose length	m	1/2" x 20
	m	3/8" x 10

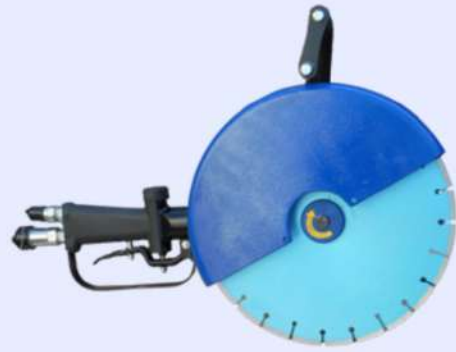
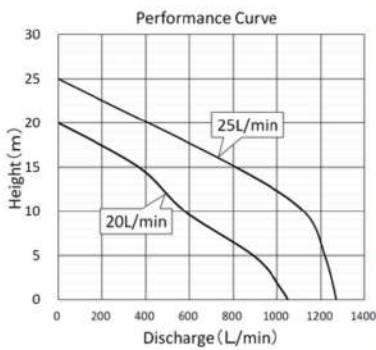
MODEL	HRS400	
Dimension		
Saw part	mm	715x285x198
	inch	28x11x7
Vice part	mm	233x170x420
	inch	9x6x16
Weight		
Saw part	kg / lbs	9.4 / 20
Vice part	kg / lbs	9.2 / 20
Oil flow	lpm / gpm	20.5 / 5
Cast iron pipe dia	A	90-400
Allowable back pressure	MPa / psi	4 / 580

Hydraulic Water Pump / Concrete Cutter



PH300 CE

3 inch discharge port
High lifting height:
Max 20m



CH140

Light weight

Only 7kg

For cutting vertically and horizontally.



Maruzen original motor

Offered best torque and rotation speed balance for concrete cutting.

Specification

MODEL	PH300
Weight	kg / lbs
Working pressure	Mpa/psi
Oil flow	lpm / gpm
Max oil flow	lpm / gpm
Max discharge	lpm
	lpm
Discharge diameter	mm
Max lifting height	m
	m
Coupling	

MODEL	CH140
Weight	kg / lbs
Working pressure	Mpa/psi
Max pressure	Mpa / psi
Oil flow	lpm / gpm
Rotation per minutes	rpm
Torque	N · m
Torque	N · m
Standard blade	
Cutting depth	mm
Coupling	

Hydraulic Longreach Pole Saw



PSH190 / PSH225

High level of safety

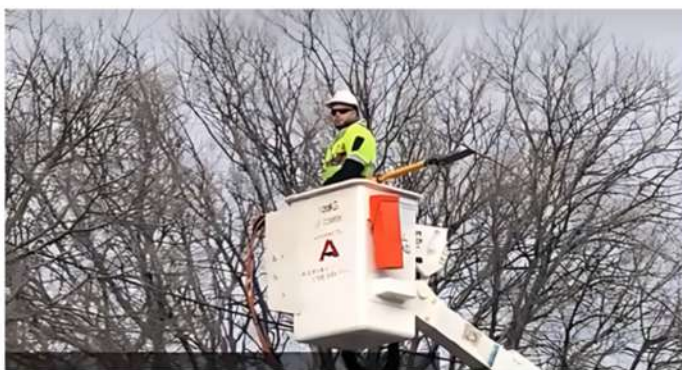
Meet OSHA regulation 1910.269
Insulated test passed.
Safety lock lever prevents unintended operation.

Stress-free cutting performance

Maruzen original motor offers high-torque

Automatic oil supply valve

A proper quantity of oil will be supplied each time the lever is held.



Maruzen original motor

Specification

MODEL		PSH190	PSH225
Length	mm / inch	1928 / 75"	2273 / 88.5"
Weight	kg / lbs	4.6 / 10.1	4.8 / 10.5
Cutting capacity	mm / inch	330 / 13"	
Operating pressure	Mpa / psi	7 - 11 / 1015 - 1595	
Oil flow	lpm / gpm	20 - 30 / 5 - 8	
Rotation per minutes	rpm	5800 (20L/min)	
	rpm	8400 (30L/min)	
Coupling		3/8" O-ring type	
Guide bar	mm / inch	330 / 13"	
Others		Hydraulic system selector valve Automatic oil valve	

Underwater hydraulic tools



DH204U

Rock drill for underwater
(Can not be used on the ground)

For drilling anchor hole
Max 20m x 3/8 hydraulic hose

*Basic specification is same as DH204 (P9).



PSH110U

Maruzen original motor
Cutting branches with high torque.

Used for cutting wooden post around the river side and agriculture farming.

Designed with hydraulic system selector valve and automatic oil valve.

*Not for power utility use.



GH180U

3-way-use
Cut, Polish, Grind

Maruzen original motor provides high torque to cut, polish and grind iron.

On the ground & underwater

Grindstone can be changed to brush or others.

Brush are used for removing waterweed on aquarium.



Specification

MODEL	PSH110U	MODEL	GH180
Length mm / inch	1100 / 43.3"	Weight kg / lbs	4 / 8
Weight kg / lbs	4 / 8.8	Working pressure Mpa/psi	8-11 / 1160-1595
Cutting capacity mm/inch	330 / 13"	Oil flow lpm / gpm	20-30 / 5-8
Operating pressure Mpa/psi	7-11 / 1015-1595	Rotation per minute rpm	3700 - 5460
Oil flow lpm / gpm	20-30 / 5-8	Max torque N · m	20L: 8.2 / 30L: 9.9
Rotation per minutes rpm	5800 (20L/min)	Grindstone size mm	OD: Φ125-180
	8400 (30L/min)		ID: Φ22
Coupling	3/8" Couplers	Coupling	3/8" Couplers
Guide bar mm / inch	330 / 13"	Allowable back pressure MPa / psi	4 / 580
		Max extension hose m	30

Underwater handheld breaker



BH053U



BH112U



BH163U



BH222U

Maruzen underwater breaker is used for concrete demolition of river side park or bridge foundation.

A hole is on the side of the tool to release water inside the tool.



Specification

MODEL		BH053U	BH112U	BH163U	BH222U
Weight	kg / lbs	6.6 / 14	11 / 24	16 / 35	22 / 48
Working pressure	Mpa/psi	9.1-10.8/ 1319-1566	8.8-12.7/ 1276-1841	7.8-11.8/ 1131-1711	8.8-12.7/ 1276-1841
Max pressure	Mpa / psi	17.2 / 2494	20.6 / 2987	20.6 / 2987	20.6 / 2987
Oil flow	lpm / gpm	20.5 / 5	9.5-25 / 2-6	14-28 / 3-7	20-25 / 5-6
Blow per minute	bpm	2700	1500-2200	1200-2000	1400
Shank size Hex	mm	19 x 50	22 x 83	25 x 108	25 x 108



ABOUT MARUZEN

Maruzen was established in November 11, 1954.

Maruzen has experience of being a manufacturer of hydraulic tools for more than 70 years. Utilizing knowledge and technology cultivated over many years, Maruzen keeps the share of hydraulic handheld tools more than 90% in Japan.

1 . Product

Maruzen has a rich lineup that stuck to high quality and is No.1 backed by many years of experience. Maruzen have unique products other companies do not handle.

2 . Development

Maruzen produces a wide variety of products in small quantities to meet the diversifying needs of customers. Always aiming to be No. 1 and Only 1, trying to improve its technology. Always listen to the needs of customers and market when developing new products.

3 . Quality

Maruzen always tries to produce 100% quality so that product troubles do not occur. Our products has passed severe durability test before mass production and we check the performance of all products every shipment. Even if a problem occurs, we will do our best to solve the problem and improve quality.

4 . Partner

Maruzen has reliable partners all over the world. They not only sell our products, but also provide excellent after-sales support with a responsibility to customers.

Leading Innovative Company

Maruzen Kogyo Co., Ltd.

155-8 Nagabuse, Mishima-shi,
Shizuoka-ken, Japan



CHOOSE YOUR TOOL

Maruzen will bring you to the next step.

🔍 Maruzen hydraulic ×

